

Inkjet Specifications

Printing features

- ◆ MFD, Expiry Date, batch, graphics, Logo, counter, date, time, shift etc.
- ◆ 1~6 lines printing (7x5)
- ◆ Upto 4 lines Chinese fonts, and fonts can be customized the font
- ◆ Max printing speed: 300m/min (5x5, single line)
- ◆ Direct input simplified Chinese, traditional Chinese, English, Arabic, Persian, Russian, German, etc.

Interface & Communication

- ◆ 7" TFT color screen, with int'l standard QWERT keypad
- ◆ USB disk, to save/restore text & config, to load logos from PC to printers, to upgrade software
- ◆ Ethernet port (10/100MB)
- ◆ RS232/485 port
- ◆ Security code and variable barcode is available

Electronic & Software Features

- ◆ 32 digits embedded LINUX operation system
- ◆ User friendly interface, WYSIWYG display
- ◆ Storage memory 40MB
- ◆ "RUN/STOP" hot key to start/stop printer automatically
- ◆ "INFO" hot key to list the history of errors to ease maintenance
- ◆ "PRINT MENU" hot key to activate printing instantly
- ◆ USB/Ethernet software upgrading
- ◆ Pop-up window to remind changing filters in every 2,000 hours
- ◆ Real time and date with calendar
- ◆ Printing mode: Standard, Multi-line High Speed, Graphic
- ◆ Text format: Horizontal-reverse, Vertical-reverse, Negative, Double Space, Bold, Character Width
- ◆ Defined grid value to move the editing cursors at a certain dot
- ◆ 3 counters & 4 shifts, automatically
- ◆ Build-in graphic/logo editing software as standard, full screen
- ◆ OPS(Encoder Direction Recognition & Printing Compensation Function)
- ◆ DMS(Distance Measuring System)
- ◆ Passwords give accesses to different users
- ◆ Multi operation language available

Hydraulic System

- ◆ Compact design, easy to use and service
- ◆ Detector in solvent bottle to give alarm when no sufficient solvent
- ◆ Head embedded magnifying glass with LED, easy to check shape of drops
- ◆ Positive air inlet to print head for dusty environment

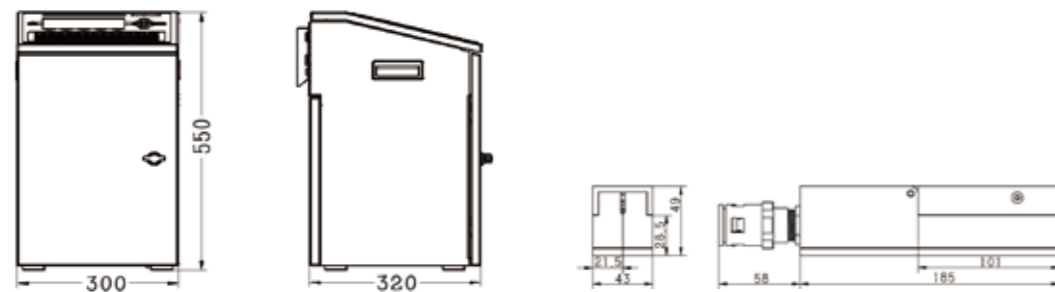
Ink Range

- ◆ Full range of inks available

Certification/Standard approved

- ◆ TÜV/ISO9001
- ◆ CE (EMC, MD&LVD)

Dimension of Main Cabinet



Shanghai Rottweil Handyware Printing Technology Co., Ltd
 T15-1-4, No.999 Ningqiao Rd., Jinqiao EPZ
 Pudong New District, Shanghai 201206
 Tel: +86-21-5834-8225
 Fax: +86-21-5834-8193
 Email: info@rottweilglobal.com
 Website: www.rottweilglobal.com www.rottweil.com.cn

Physical Features

- ◆ Printer house/Cabinet: IP54 stainless steel
- ◆ Umbilical hose standard: Length 2,500mm, Diameter 20mm
- ◆ Printer dimension: H550x W300x D320mm
- ◆ Print head dimension: H185.5x W43x D49mm
- ◆ G.W.: 33KG
- ◆ Power supply: Single phase, 110~220V, 50/60HZ
- ◆ Electrical plug, multi type available
- ◆ Work temperature: 5~45C(35~100F)
- ◆ Work humidity: max.90% R.H., non-condensing

Optional Accessories

- ◆ Photo sensor
- ◆ Sliding table
- ◆ Shaft encoder
- ◆ PC logo software
- ◆ Alarm system, 3 colors
- ◆ L shape head
- ◆ Speed adjustable conveyor
- ◆ Meter counter device



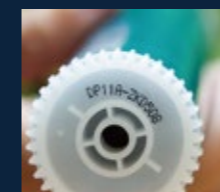
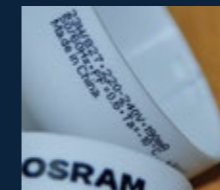
i-jet 455B

Small character Inkjet Printer ■ ■ ■

Simple

Reliable

Economical



Simple for Users

SIMPLE & EASY DESIGN FOR OPERATION & SERVICE

- 7" TrueColor Screen with WYSIWYG display
- "PRINT MENU" hot key, one touch to START/STOP printing
- Build-in logo editor to create/edit logos easily at any time you want
- Head-embedded magnifying glass with LED to observe ink drops
- Positive air to print head is available to keep head clean & dry under tough working condition
- Security Code, variable barcode printing function available



Ink system



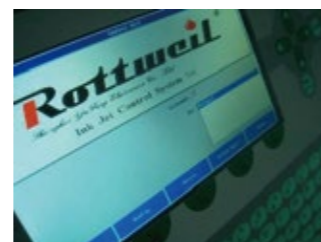
Reliable for Productivity

ONE OF THE MOST RELIABLE INK SYSTEMS DESIGNED BY GERMANY

- Core Parts imported with high quality
- Auto flush and full clean system, ensures a smooth starting-up process
- Isolated ink system and electrical system
- IP54 protection level, to adapt to the harsh environment of use
- Throat using industrial grade protection, adapt to various harsh production environment



Print head



Operation panel, LINUX system

Economical

RUNNING AND MAINTENANCE COST LOW, CHOICE OF HIGH QUALITY WITH REASONABLE PRICE

- Lower consumption. Economic, saving, and high efficient
- 1.5L big volume solvent container, reduce the refill times
- Low running cost, low maintenance cost, only change filters kit as regular maintenance service
- Consumable used based on requirement, can refill easily no waste, no hidden cost
- Accurate meter marking, save time to adjust the meter
- Widely used in electrical appliances, auto parts, Beverage etc.



big solvent container (1.5L)



Printing Samples

i-jet 455B Standard Printing Mode

	1 line	2 lines	3 lines	4 lines
5 dots	ABCDEF1234567	合格 2016/08/17 合格 2014/08/18	合格 LOT: 1408001A MFG: 14/08/18 EXP: 16/08/17	BAT: 0875E-24 LOT: 1408001A MFG: 14/08/18 EXP: 16/08/17
7 dots	ABCDEF1234567	合格 2016/08/17 合格 2014/08/18	LOT: 1408001a MFG: 14/08/18 EXP: 16/08/17	BAT: 0875E-24 LOT: 1408001a MFG: 14/08/18 EXP: 16/08/17
11 dots	生产日期: 2014/08/18	有效日期: 2016/08/17 生产日期: 2014/08/18		
24 dots	美创力小字符 ABCDefgh5678			批 号 有 效 期 望
Special	Barcode, 2D Matrix, Arabic, Graphical, LOGO...			
	rottweil10818	QR code	Rottweil®	Logo